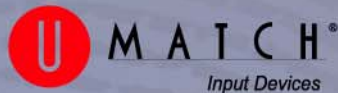


Works With



# Software Development Kit

## BioLink®



BIO-METRICA LLC



TECHNOLOGY YOU IDENTIFY WITH™

Bio-Metrica LLC  
email: [info@bio-metrica.com](mailto:info@bio-metrica.com)  
WEB: [www.bio-metrica.com](http://www.bio-metrica.com)

BSDK

Empower Your All-scale Solutions with Innovative Biometric Technologies

### Overview

BioLink SDK is a full-featured set of mathematical algorithms providing any scale developers (regardless of prior biometric or imaging experience) the ability to smoothly integrate unique biometric technologies into new or existent various access control systems, client or server hardware, software and so forth.

BSDK offers you a smart way for building security and access control subsystems in any kind of business software with personal identification or authentication.

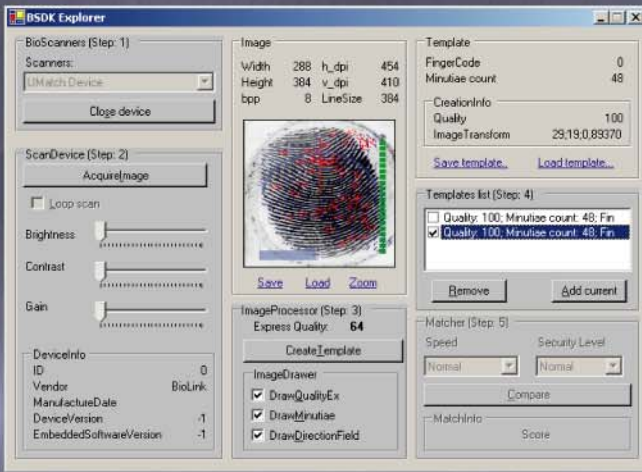
### Application Fields

- office or corporate applications;
- ERP, CRM and other enterprise management solutions
- physical access control systems
- payment systems or terminals (including various on-line services, that require person's authentication and/or identification)
- financial, banking, transport industry
- social protection services

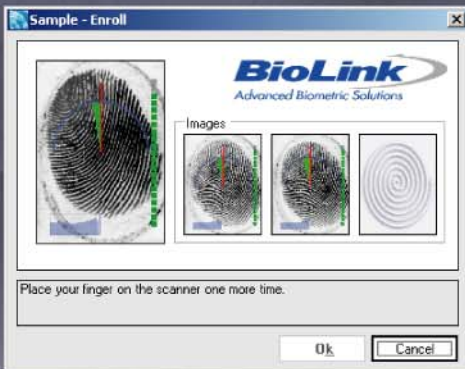
Growing popularity of biometric technologies along with their reliability, safety and adaptability, guarantees that all solutions having biometrics as the core technology will be successful.



## BSDK Explorer Interface



## BSDK Sample Enroll Interface



U-Match  
MatchBook  
Scanner



Verifier 300 LC  
Scanner




For more information, please visit BioLink web site

[www.bio-metrica.com](http://www.bio-metrica.com)

# Software Development Kit

# BioLink®

## BioLink SDK features

- C, C++, C#, Delphi support
- Full featured, high level enrollment and verification dialogs displayable with single function call
- Object oriented API
- Built-in Graphic User Interface
- BioLink SDK Fingerprint Image Processor module
- BioLink SDK Fingerprint Matcher module
- Universal Image Processor component allows the integration of third-party fingerprint input devices
- Fingerprint features visualization library
- Multifinger templates support
- Various fingerprint scanners support
- Full control over scanner devices through lower level call
- 1-to-many fingerprint matching via Authenticon Enterprise Server / Authenticon Software Server
- 1-to-1 and 1-to-some fingerprint algorithms included
- Authenticon Toolkit support
- BioAPI 1.1 Biometric Service Provider (BSP) included
-  19794-2 Finger Minutiae Data support
-  19794-4 Finger Image Data support
- WSQ Image format support
- Compatibility with older BSDK versions on the data level
- Complete sample source code and documentation
- Supports Windows 98/Me/NT4/2K/XP/2003

## BSDK core consists of the following namespaces:

- **Base** - includes the objects and interfaces which are used all over the SDK.
- **Persistent** - provides the objects for serialization purposes.
- **Render** - allows the biometric features visualization.
- **Math** - allows the biometric mathematic functions such as compare and template creation.
- **Scan** - unifies the use of biometric scanner devices from different vendors.
- **ISO** - provides Export/Import support for ISO Biometric data interchange formats.

## System Requirements

- Pentium III 600MHz processor or better
- Windows 9x/ME/2000/XP/2003
- .NET framework 1.1, 2.0
- Microsoft Visual Studio .Net 2003

Requirements for the RAM available depend on the application you are developing. For further details refer to your development environment documentation.

## Package Contents

- Software development kit (SDK) software
- SDK documentation
- Two development licenses

